

Catalog Number
Notes
Type

FEATURES & SPECIFICATIONS

INTENDED USE

This fresh and innovative track head combines aesthetics with superior functionality for applications such as specialty retail, grocery, galleries, museums, hospitality, residential and educational environments.

CONSTRUCTION

Lamp holder: Clear cylinder glass with brushed nickel fittings sheds light in desired areas.

Adaptor: Low-profile injection-molded track mounting adaptor compatible with Lithonia Lighting track series (LTS), Cooper Lighting Halo® "H" L641 and L651 Track, and Hampton Bay™ Track.

Note: Lithonia Decorative Track Lighting components are not compatible with Lithonia Commercial Track Lighting components. Installation of mixed components will result in risk of shock hazard or fire, damage of fixture, failure to illuminate, and it does not meet UL standards.

Available in brushed nickel.

ELECTRICAL

50W MR16 style uses a GU10 base 12V porcelain socket. Lamp included.

120 VAC 60Hz

LISTINGS

cETL_{us} Listed to UL1574 Track Lighting Standard.

Dry location.

WARRANTY

1-year limited warranty. Complete warranty terms located at:

www.acuitybrands.com/CustomerResources/Terms_and_conditions.aspx.

Actual performance may differ as a result of end-user environment and application.

Note: Specifications subject to change without notice.

Decorative Track Lighting

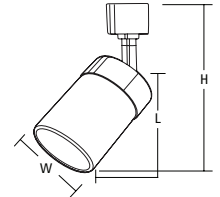
LTHCYLD MR16 SERIES

Halogen Line Voltage Track Head
MR16 GU10 Lamps



Specifications			
Lamp designation	Width	Length	Maximum height
MR16	3-1/4	4-3/4	7

All dimensions are inches (centimeters) unless otherwise indicated.



ORDERING INFORMATION

All configurations of this product are considered "standard" and have short lead times.

Example: LTHCYLD MR16GU10 BN

LTHCYLD	MR16GU10	BN
Series	Lamp/Lumen output	Finish
LTHCYLD Clear cylinder glass track head	MR16GU10 50W, 600 lumens (per head)	BN Brushed nickel

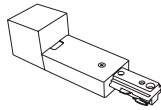
LTHCYLD MR16 Halogen Line Voltage Track Head

TRACK ACCESSORIES



Live End Conduit

Connects to the end of the linear track section supplying power from a conduit feed.

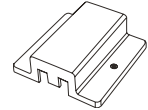


Series	Finish
LTLECF	(blank) Matte white connector with black cover



Floating Feed

Permits track to be wired anywhere along track length.

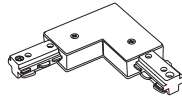


Series	Finish
LTFC	(blank) Matte white connector with black and white cover



L Connector

Joins two track sections to make a 90° angle.

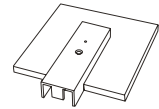


Series	Finish
LTLDLC	(blank) Matte white connector with black cover

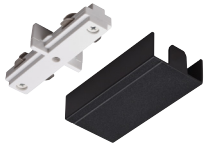


Live End Junction Box Feed

Connects to the end of the linear track section supplying power from a junction box.

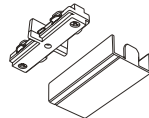


Series	Finish
LTLLDC	(blank) Matte white connector with black cover



Straight Connector

Joins two track sections in a straight run.

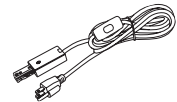


Series	Finish
LTCV	(blank) Matte white connector with black cover

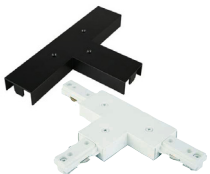


Live End Power Feed

Permits track to be connected to grounded outlet using a 15' cord with switch included.

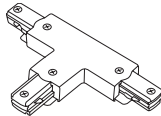


Series	Finish
LTLECS	(blank) Matte white

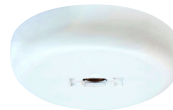


T Connector

Joins three sections at 90° angles.

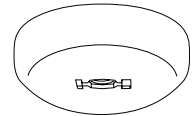


Series	Finish
LTTC	(blank) Matte white connector with black cover



Monopoint

Allows for a single linear track head to be installed in into an existing junction box.



Series	Finish
LTMPR	(blank) Matte white



Track Stick

4-foot or 8-foot, 1-circuit track section with end caps.

Series	Finish
LTS4	MW Matte white
LTS8	DBL Black